

Optimise 70

Acoustic solutions



COMMERCIAL

HETEROGENEOUS VINYL

Optimise 70

Quiet and colourful vinyl for heavy wear spaces

By reducing sound and embracing colour, Optimise 70 lifts heavy traffic areas out of the ordinary, making your projects quieter and brighter. Featuring **54 solid colour, wood and terrazzo designs, all with 19dB impact sound reduction**, Optimise 70 provides a high-performance solution to the challenge of busy spaces.

FR Un vinyle coloré et silencieux pour des espaces très sollicités

En réduisant le bruit tout en mettant en lumière la couleur, la gamme Optimise 70 sort de l'ordinaire les zones à forte fréquentation en les rendant à la fois plus calmes et plus joyeuses. Composée de 54 modèles unis, bois et terrazzo, réduisant les bruits d'impact de 19 dB. Cette collection apporte des solutions très performantes aux difficultés rencontrées dans les espaces très fréquentés.

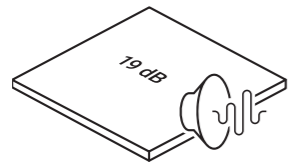
NL Stil en kleurrijk vinyl voor intensief gebruikte ruimtes

Optimise 70 vermindert lawaai en voegt kleur toe aan drukbezochte ruimtes. Zo worden uw projecten tegelijk wat stiller én wat feller. Beschikbaar in **54 designs (kleur, houteffect of terrazzolook), allemaal met een contactgeluidsreductie van 19dB**, is onze Optimise 70-collectie een hoogwaardige oplossing voor uitdagende, drukke ruimtes.

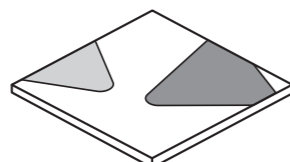
DE Schalldämmendes und farbenfrohes Vinyl für stark beanspruchte Bereiche

Mit der Reduzierung des Schalls und die Einbeziehung von Farben schafft Optimise 70 in stark frequentierten Bereichen eine angenehm leise und helle Atmosphäre. **Mit 54 Unifarben, Holz- und Terrazzo-Designs, alle mit einer Trittschalldämmung von 19 dB**, bietet Optimise 70 eine leistungsstarke Lösung für die Anforderungen in stark frequentierten Räumen.

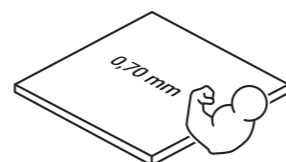
Benefits



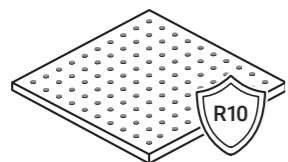
Acoustic insulation



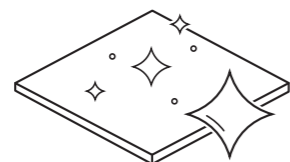
Colourful creativity



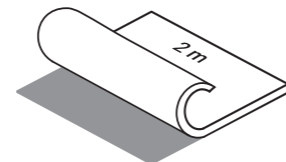
Heavy use



Slip resistance



Clean and hygienic Sanitec



Easy installation





Pinnacles T83 / Rochus T66 / Cevennes T03

Optimise 70

The Collection

06-07
CRYSTAL

08-09
OMBRA

10-11
ROCHUS

10-13
CEVENNES

14-15
PINNACLES

16-17
CAMARGUE

18-19
ELIAS

20-21
OLYMPUS

22-12
TORONTO

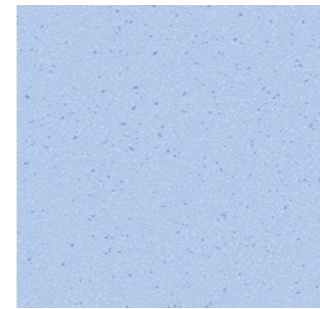
BEYOND
FLOORING



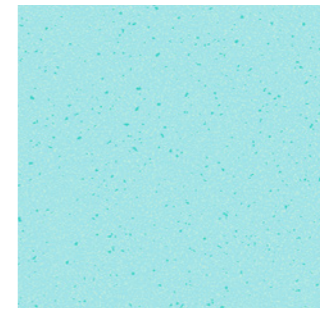
Crystal T92 - T84 - T77 - T73

BEYOND
FLOORING

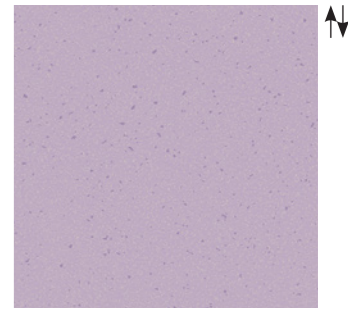
Optimise 70
Crystal



Crystal T77 LRV 28
PR 100 x 100 cm WR 471



Crystal T73 LRV 45
PR 100 x 100 cm WR 450



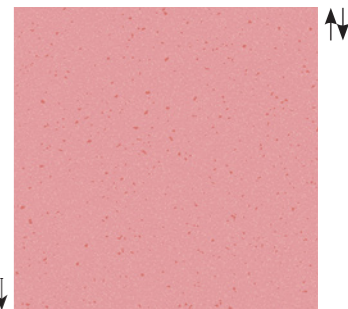
Crystal T84 LRV 22
PR 100 x 100 cm WR tbc



Crystal T54 LRV 55
PR 100 x 100 cm WR tbc



Crystal T64 LRV 39
PR 100 x 100 cm WR 462



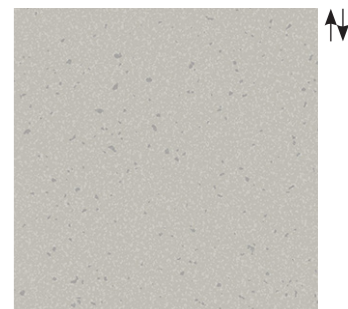
Crystal T14 LRV 33
PR 100 x 100 cm WR tbc



Crystal T24 LRV 46
PR 100 x 100 cm WR 424



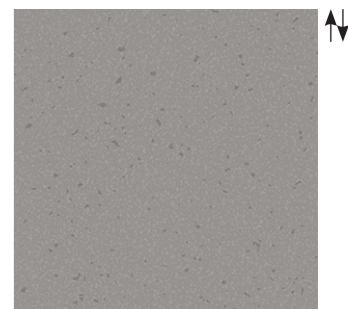
Crystal T34 LRV 43
PR 100 x 100 cm WR 407



Crystal T94 LRV 45
PR 100 x 100 cm WR 409



Crystal T92 LRV 56
PR 100 x 100 cm WR 409



Crystal T96 LRV 17
PR 100 x 100 cm WR 409

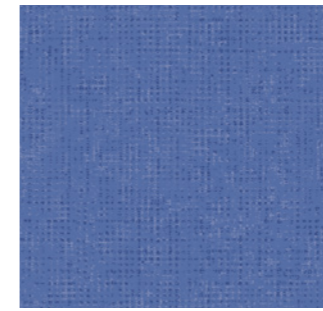
LRV - Light Reflectance Value / WR - Matching Welding Rod / PR - Pattern Repeat



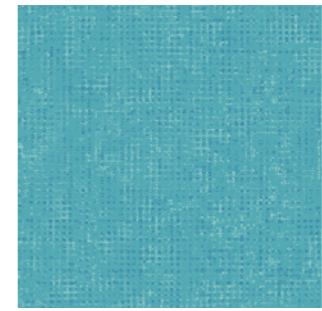
Ombra T20

BEYOND
FLOORING

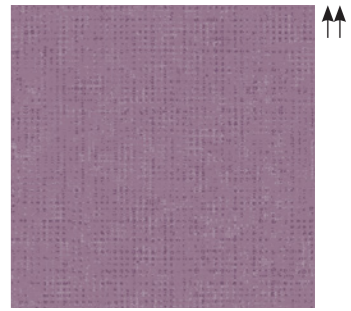
Optimise 70
Ombra



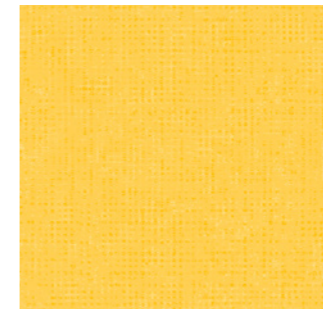
Ombra T75 LRV 15
PR 100 x 100 cm WR 473



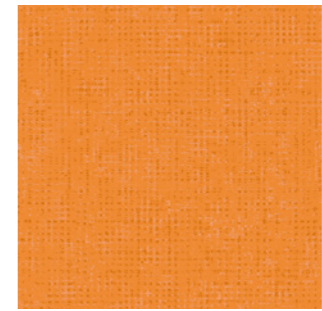
Ombra T72 LRV 29
PR 100 x 100 cm WR 450



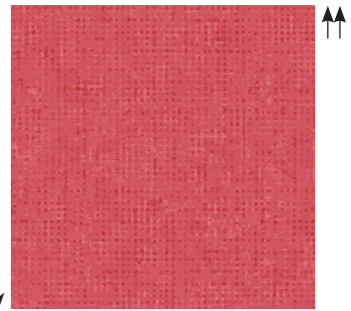
Ombra T85 LRV 24
PR 100 x 100 cm WR tbc



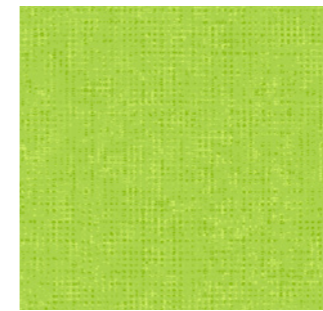
Ombra T55 LRV 404
PR 100 x 100 cm WR tbc



Ombra T65 LRV 462
PR 100 x 100 cm WR 443



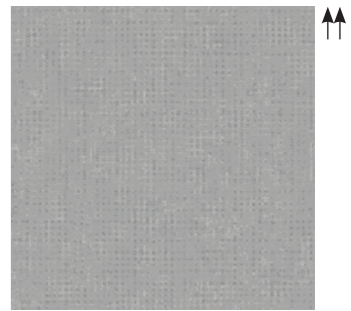
Ombra T15 LRV 18
PR 100 x 100 cm WR 412



Ombra T20 LRV 37
PR 100 x 100 cm WR 411



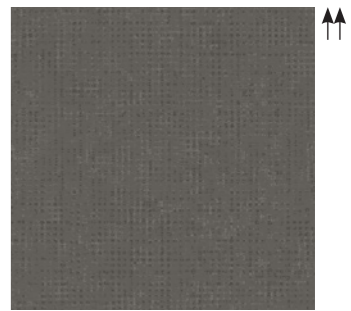
Ombra T35 LRV 29
PR 100 x 100 cm WR 437



Ombra T95 LRV 31
PR 100 x 100 cm WR 491



Ombra T92 LRV 26
PR 100 x 100 cm WR 477



Ombra T97 LRV 16
PR 100 x 100 cm WR 448

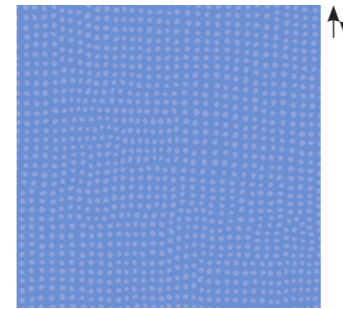
LRV - Light Reflectance Value / WR - Matching Welding Rod / PR - Pattern Repeat



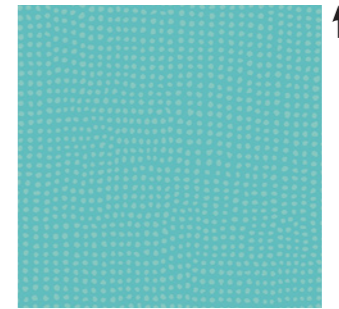
Rochus T26 - T76

BEYOND
FLOORING

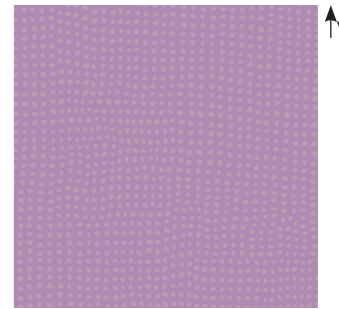
Optimise 70
Rochus



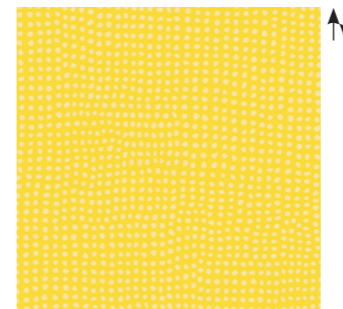
Rochus T76 LRV 21
PR 100 x 100 cm WR 484



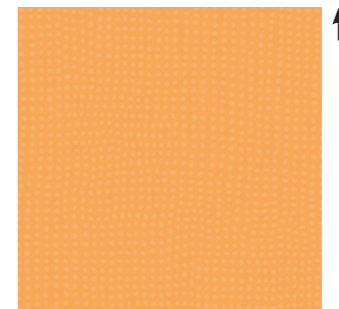
Rochus T74 LRV 35
PR 100 x 100 cm WR 450



Rochus T86 LRV 28
PR 100 x 100 cm WR tbc



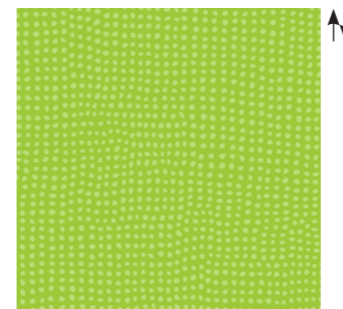
Rochus T56 LRV 50
PR 100 x 100 cm WR 406



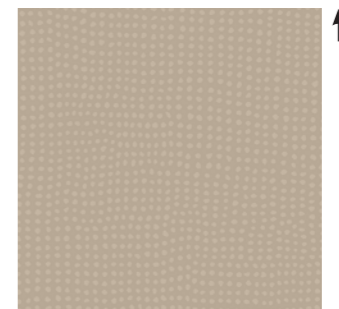
Rochus T66 LRV 35
PR 100 x 100 cm WR 462



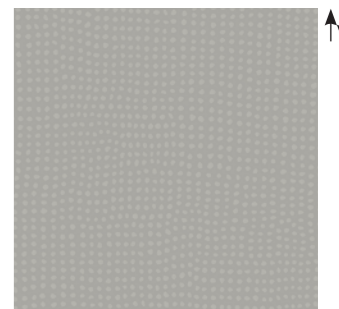
Rochus T16 LRV 16
PR 100 x 100 cm WR tbc



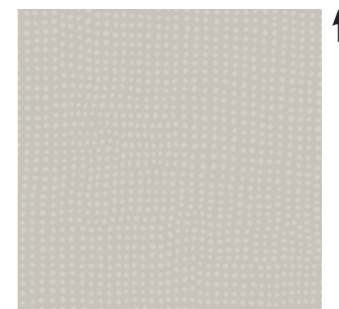
Rochus T26 LRV 43
PR 100 x 100 cm WR 411



Rochus T36 LRV 36
PR 100 x 100 cm WR 436



Rochus T96 LRV 36
PR 100 x 100 cm WR 406



Rochus T93 LRV 49
PR 100 x 100 cm WR 441



Rochus T97 LRV 27
PR 100 x 100 cm WR 497

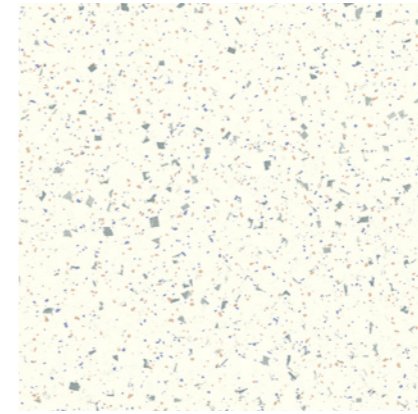
LRV - Light Reflectance Value / WR - Matching Welding Rod / PR - Pattern Repeat



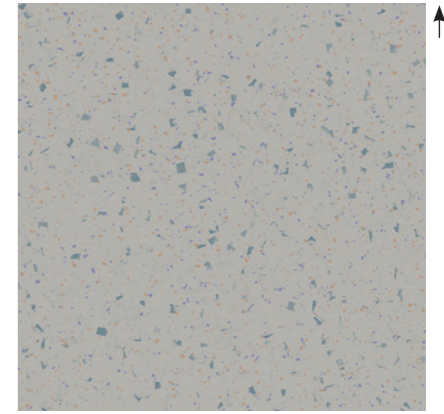
Cevennes T03 / Ombra T55 - T35

BEYOND
FLOORING

Optimise 70
Cevennes



Cevennes T03 - 2 m
PR 100 x 100 cm

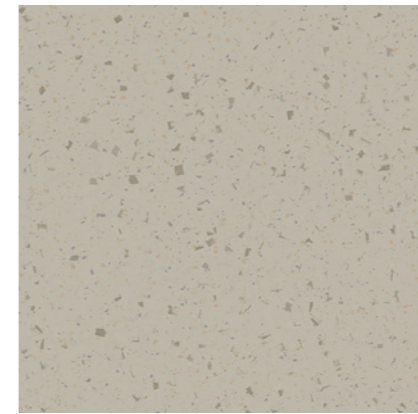


Cevennes T94 - 2 m
PR 100 x 100 cm

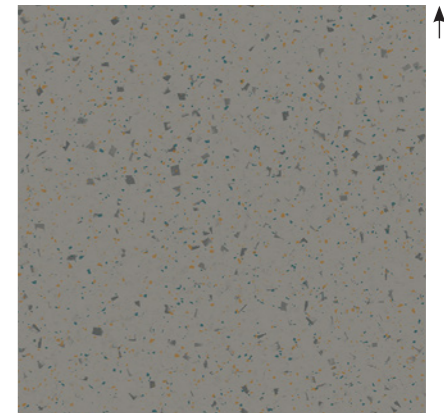


LRV 69
WR 441

LRV 45
WR 409



Cevennes T91 - 2 m
PR 100 x 100 cm



Cevennes T97 - 2 m
PR 100 x 100 cm



LRV 41
WR 16

LRV 24
WR 408

LRV - Light Reflectance Value / WR - Matching Welding Rod / PR - Pattern Repeat



Pinnacles T98

BEYOND
FLOORING

Optimise 70
Pinnacles



Pinnacles T08 - 2 m
PR 100 x 100 cm

LRV 50
WR 407



Pinnacles T91 - 2 m
PR 100 x 100 cm

LRV 38
WR 443



Pinnacles T83 - 2 m
PR 100 x 100 cm

LRV 28
WR 492



Pinnacles T98 - 2 m
PR 100 x 100 cm

LRV 14
WR 496

LRV - Light Reflectance Value / WR - Matching Welding Rod / PR - Pattern Repeat



Camargue T04

BEYOND
FLOORING

Optimise 70
Camargue



Camargue T04 - 2 m
PS 10 x 50/70-60/60 cm
PR 100 x 120 cm

LRV 36
WR 495



Camargue T33 - 2 m
PS 10 x 50/70-60/60 cm
PR 100 x 120 cm

LRV 26
WR 435



Camargue T62 - 2 m
PS 10 x 50/70-60/60 cm
PR 100 x 120 cm

LRV 34
WR 440



Camargue T83 - 2 m
PS 10 x 50/70-60/60 cm
PR 100 x 120 cm

LRV 24
WR 419



Camargue T89 - 2 m
PS 10 x 50/70-60/60 cm
PR 100 x 120 cm

LRV 20
WR 496

LRV - Light Reflectance Value / WR - Matching Welding Rod / PS - Plank size / PR - Pattern Repeat



Ombra T72 / **Elias T93** / Crystal T84

BEYOND
FLOORING

Optimise 70

Elias



Elias T93 - 2 m
PS Groutless x 150 cm
PR 100 x 150 cm

LRV 32
WR 409



Elias T32 - 2 m
PS Groutless x 150 cm
PR 100 x 150 cm

LRV 38
WR 443

LRV - Light Reflectance Value / WR - Matching Welding Rod / PS - Plank size / PR - Pattern Repeat



Olympus T91

BEYOND
FLOORING

Optimise 70
Olympus



Olympus T91 - 2 m
PS (4x25) x 150 cm
PR 100 x 150 cm

LRV 33
WR 408



Olympus T33 - 2 m
PS (4x25) x 150 cm
PR 100 x 150 cm

LRV 36
WR 443

LRV - Light Reflectance Value / WR - Matching Welding Rod / PS - Plank size / PR - Pattern Repeat



Toronto T91

BEYOND
FLOORING

Optimise 70
Toronto



Toronto T91 - 2 m
PS 16,6 x 100 cm
PR 100 x 100 cm

LRV 52
WR 416



Toronto T81 - 2 m
PS 16,6 x 100 cm
PR 100 x 100 cm

LRV 29
WR 440



Toronto T93 - 2 m
PS 16,6 x 100 cm
PR 100 x 100 cm

LRV 36
WR 440



Toronto T87 - 2 m
PS 16,6 x 100 cm
PR 100 x 100 cm

LRV 22
WR 448

LRV - Light Reflectance Value / WR - Matching Welding Rod / PS - Plank size / PR - Pattern Repeat



Optimise 70

Technical Specifications

Spécifications techniques - Technische specificaties - Technische Spezifikationen

Level of use / Classe d'usage - Eignungsklasse - Gebruiksklasse	EN ISO 10874	23 - 34 - 42
Total thickness / Epaisseur totale - Gesamtdicke - Totale dikte	EN ISO 24346	3,40 mm
RRL Pendulum test (Wet Test)	RRL	36+ Low slip risk potential
Wear layer / Couche d'usure - Nutzschrift - Slijtlaag	EN ISO 24340	0,70 mm
Wear layer PUR treatment / Traitement polyuréthane - Schutz vor Schmutz PUR - PUR slijtlaag behandeling		HyperGuard+
Fonghi-bacterio static treatment / Traitement fonghi-bacteriostatic - Keimfreie Oberfläche - Schimmel-bacteriewerende behandeling		Sanitec
Total weight/m² / Poids total/m ² - Gewicht/m ² - Totaal gewicht/m ²	EN ISO 23997	ca. 2.904 g
Heterogeneous PVC / PVC hétérogène - Heterogene PVC - Heterogene PVC	ISO 11638	
Width / Largeur - Breite - Breedte	EN ISO 24341	2 m
Standard Length / Longueur standard - Standardlänge - Standaardlengte	EN ISO 24341	ca. 25m
Weight of standard roll / Poids standard des rouleaux - Standard-Rollengewicht - Standaard rolgewicht		ca. 149 kg
Inflammability / Classement feu - Brandverhalten - Brandklasse	EN 13501	Bfl-S1 (fully glued)
Slip resistance / Glissance - Rutschfest - Antislip	EN 13893	DS
Slip restraint / Résistance au glissement - Rutschhemmung - Slipweerstand	DIN 51130	R10
Residual indentation / Poinçonnement rémanent - Eindrückverhalten - Restindruk	EN ISO 24343-1	0,12 mm (norm ≤ 0,20 mm)
Furniture leg resistance / Résistance au pied de meuble - Möbelschubtest - Meubelpoottest	EN ISO 16581	Very good
Curling / Incurvation - Schüsselung - Krulling	EN ISO 23999	≤ 8 mm
Electrical resistance / Résistance électrique - Elektrischer Widerstand - Elektrische weerstand	EN ISO 10965	10 ⁹ Ohm
Static electrical propensity / Accumulation de charges électrostatiques - Elektrostatische Verhaltung - Electrostatische Propensiteit	EN 1815	≤ 2kV (antistatic)
Dimensional stability / Stabilité dimensionnelle - Massänderung - Dimensionele stabiliteit	EN ISO 23999	0,05% (norm ≤ 0,40%)
Thermal conductivity / Conductivité thermique - Wärmeleitfähigkeit - Warmtedoorgangscoeffizient	EN ISO 10456	0,25 W/(m.K)
Heat insulation / Isolation thermique - Wärmedurchlasswiderstand - Thermische isolatie	EN ISO 12664	0,031 (m ² .K/W)
Abrasion group / Groupe d'abrasion - Verschleißverhalten - Slijtageweerstand	ISO 10582	Type I
Indoor air quality / Qualité de l'air intérieur - Raumluftqualität - Binnenmilieu		LOW VOC
Acoustic insulation / Efficacité acoustique - Trittschallverbesserungsmaß - Kontaktgeluidisolatie	EN ISO 717-2	ΔLw 19 dB
Castor chair resistance / Résistance aux chaises à roulettes - Stuhlrollenfestigkeit - Bestand tegen stoelwielen	EN ISO 4918	Very good
Castor type / Type de chaises à roulettes - Stuhlrolle Typ - Type stoelwielen	EN 12529	Type W
Light fastness / Résistance à la lumière - Lichtechtheit - Lichtechtheid	ISO 105B02	6-7
Underfloor heating / Chauffage par le sol - Bodenheizung - Vloerverwarming	EN 12524	Suitable
Resistance to chemicals / Résistance aux produits chimiques - Chemikalienbeständigkeit - Chemicaliënresistentie	EN ISO 26987	Very good
Hot welding / Soudage thermique - Thermische Verschweißung - Warm lassen		Available
Cold welding / Soudage à froid - Kaltverschweißung - Koud lassen	Invisiweld	Suitable
Warranty years / Garantie ans - Garantie Jahren - Garantie jaren		10

The warranty covers manufacturing defects and premature wear in the event of normal use | La garantie couvre les vices de fabrication et l'usure précoce en usage normal
Die Garantie deckt Herstellungsfehler und vorzeitigen Verschleiß bei normaler Nutzung | De garantie dekt fabricagefouten en voortijdig afslijten bij normaal gebruik

IVC reserves the right to change or amend any written information without notice.
Ensure the latest information is being consulted by referring to the website.





CHEMISTRY



GEOGRAPHY



MATH



Pinnacles T83 / Ombra T15 / Crystal T24 / Ombra T65

Get in touch

Want to learn more about IVC Commercial's flooring solutions, or need help tackling an exciting project? We've got you covered.

Go to www.ivc-commercial.com to browse our collections, order samples, download inspirational brochures or, stop by one of our showrooms. You can also make an appointment with our dedicated team by sending us an email via info@ivc-commercial.com. Get in touch!

FR Contactez-nous

Vous souhaitez en savoir plus sur les solutions de sol IVC Commercial ? Vous avez besoin d'aide pour un projet ? Nous sommes là pour vous. Cliquez sur www.ivc-commercial.com pour découvrir nos collections, commander des échantillons, télécharger des brochures d'inspiration. Vous pouvez également venir découvrir l'un de nos showrooms en prenant rendez-vous auprès de notre équipe dédiée à l'adresse info@ivc-commercial.com. Contactez-nous !

NL Contacteer ons

Wens je meer info over de vloeroplossingen van IVC Commercial? Of kunnen we je helpen met je boeiend project? We staan voor je klaar. Ga naar www.ivc-commercial.com om onze collecties te bekijken, stalen bestellen, inspirerende brochures te downloaden. Of kom langs in een van onze showrooms. Je kunt ook een afspraak maken met een van onze gemotiveerde medewerkers: stuur een e-mail naar info@ivc-commercial.com. Neem zeker contact met ons op!

DE Kontaktieren Sie uns

Möchten Sie mehr über die Bodenbelagslösungen von IVC Commercial erfahren, oder benötigen Sie Hilfe bei einem anspruchsvollen Projekt? Wir sind für Sie da. Besuchen Sie www.ivc-commercial.com, um in unseren Kollektionen zu stöbern, Muster zu bestellen, inspirierende Broschüren herunterzuladen, oder schauen Sie in einem unserer Showrooms vorbei. Sie können auch per E-Mail einen Termin mit unserem spezialisierten Team vereinbaren: info@ivc-commercial.com. Kontaktieren Sie uns einfach!

Follow us on 



BEYOND
FLOORING

Olympus T33



www.ivc-commercial.com

